

Conducting a Stakeholder Network Analysis

Niamh O’Kane
Centre for Public Health
Queen’s University Belfast
niamh.okane@qub.ac.uk

Workshop – Introduction to Stakeholder Network Analysis : 28 May 2024

Overview



COMPLEX SYSTEMS AND NETWORK
SCIENCE FOR PREVENTION AND CONTROL
OF NONCOMMUNICABLE DISEASES

*A WHO COLLABORATING CENTRE
FOR RESEARCH AND TRAINING*

Objective 1

- Understand the steps involved in conducting a stakeholder network analysis

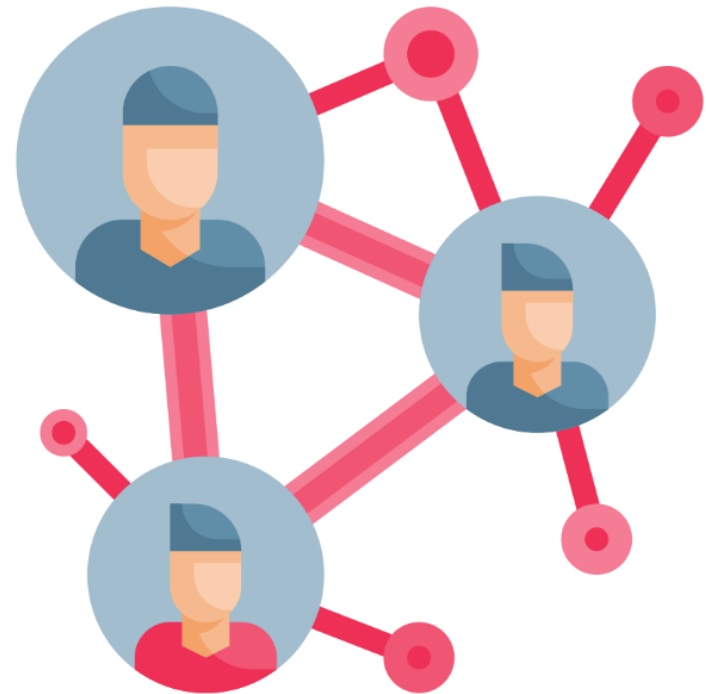
Stakeholder network analysis



COMPLEX SYSTEMS AND NETWORK
SCIENCE FOR PREVENTION AND CONTROL
OF NONCOMMUNICABLE DISEASES

*A WHO COLLABORATING CENTRE
FOR RESEARCH AND TRAINING*

- There are different tools available to help support the conduct of stakeholder network analysis



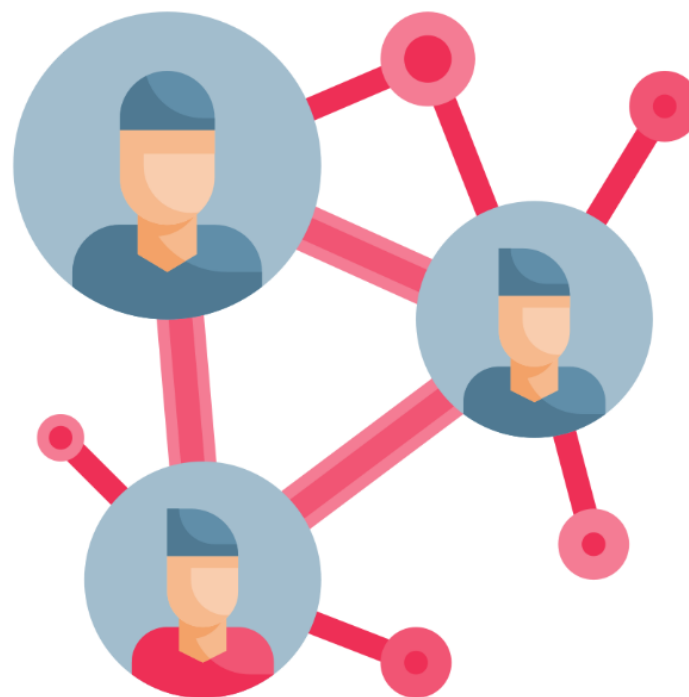
Stakeholder network analysis



COMPLEX SYSTEMS AND NETWORK
SCIENCE FOR PREVENTION AND CONTROL
OF NONCOMMUNICABLE DISEASES

*A WHO COLLABORATING CENTRE
FOR RESEARCH AND TRAINING*

- While many tools for the **design, data collection** and **data analysis** of stakeholder network surveys exist, they are not always free of charge or covering **all three** of these steps



Stakeholder Net



COMPLEX SYSTEMS AND NETWORK
SCIENCE FOR PREVENTION AND CONTROL
OF NONCOMMUNICABLE DISEASES

*A WHO COLLABORATING CENTRE
FOR RESEARCH AND TRAINING*

- Developed by QUB/WHO Collaborating Centre for research and training on complex systems and network science for NCD prevention and control
- Web-based tool
- Created to facilitate the **design, data collection** and **data analysis** of stakeholder network surveys

Planning a SNA



COMPLEX SYSTEMS AND NETWORK
SCIENCE FOR PREVENTION AND CONTROL
OF NONCOMMUNICABLE DISEASES

*A WHO COLLABORATING CENTRE
FOR RESEARCH AND TRAINING*

Purpose

**Identify
info users**

**Review
existing
info**

**What info
do I want
to
collect?**

**Develop a
timeline**

Ethics

Planning a SNA



COMPLEX SYSTEMS AND NETWORK
SCIENCE FOR PREVENTION AND CONTROL
OF NONCOMMUNICABLE DISEASES

*A WHO COLLABORATING CENTRE
FOR RESEARCH AND TRAINING*

Purpose

- Important to have a clear focus
- Establish parameters of your SNA
- Identify variables to be measured later in the process
- Clarify objectives

Planning a SNA



COMPLEX SYSTEMS AND NETWORK
SCIENCE FOR PREVENTION AND CONTROL
OF NONCOMMUNICABLE DISEASES

*A WHO COLLABORATING CENTRE
FOR RESEARCH AND TRAINING*

Purpose

- Consider existing knowledge
 - Identify gaps in evidence base and/or own professional knowledge
- Map out issues you are attempting to address
 - Create a list of issues, interests, objectives and desired outcomes
 - Prioritise them

Planning a SNA



COMPLEX SYSTEMS AND NETWORK
SCIENCE FOR PREVENTION AND CONTROL
OF NONCOMMUNICABLE DISEASES

*A WHO COLLABORATING CENTRE
FOR RESEARCH AND TRAINING*

Purpose

- Relevant examples of how the Stakeholder Net tool can be used should be considered:
 - Developing a protocol
 - Providing input for other analyses
 - Informing/updating action plans
 - Providing information to challenge/support policy
 - Guide participatory consensus-building processes

Planning a SNA



COMPLEX SYSTEMS AND NETWORK
SCIENCE FOR PREVENTION AND CONTROL
OF NONCOMMUNICABLE DISEASES

*A WHO COLLABORATING CENTRE
FOR RESEARCH AND TRAINING*

**Identify
info users**

- The user group will vary
- User group:
 - Primarily - those who will be involved in data collection
 - Secondly - those who will directly benefit from data collection
- May be useful to establish a working group of these users who can input into protocol, analyses and strategies for data
- Consider users of the information beyond working groups/how they might access data

Planning a SNA



COMPLEX SYSTEMS AND NETWORK
SCIENCE FOR PREVENTION AND CONTROL
OF NONCOMMUNICABLE DISEASES

A WHO COLLABORATING CENTRE
FOR RESEARCH AND TRAINING

Review existing info

- There may be existing data about the organisations/connections you intend to map
- These data can supplement or support your SNA (*or render it unnecessary*)
- Identify local sources and inquire about data availability
- Understanding what data is in circulation about your target group will help avoid collection of unnecessary/duplicate data

Planning a SNA



COMPLEX SYSTEMS AND NETWORK
SCIENCE FOR PREVENTION AND CONTROL
OF NONCOMMUNICABLE DISEASES

*A WHO COLLABORATING CENTRE
FOR RESEARCH AND TRAINING*

**What info
do I want
to
collect?**

- Quality over quantity
- Carefully consider information you intend to collect
- How you plan to put this to use
- Useful to identify a question or range of sub-questions relating to your objectives

Planning a SNA



COMPLEX SYSTEMS AND NETWORK
SCIENCE FOR PREVENTION AND CONTROL
OF NONCOMMUNICABLE DISEASES

*A WHO COLLABORATING CENTRE
FOR RESEARCH AND TRAINING*

Develop a timeline

- A network is dynamic, fluid, temporal
- Relationships are not static
- Consider temporality of the project/network you intend on mapping
- Establish a timeline for the process that is:
 - Realistic
 - Achievable
 - Includes all the major steps for conducting a SNA detailed in the Stakeholder Net tool

Planning a SNA



COMPLEX SYSTEMS AND NETWORK
SCIENCE FOR PREVENTION AND CONTROL
OF NONCOMMUNICABLE DISEASES

*A WHO COLLABORATING CENTRE
FOR RESEARCH AND TRAINING*

Ethics

- Check ethics protocols and requirements in your organisation
- Generally, any research involving human participants (esp. vulnerable groups) requires robust ethical checks
- SNA involves participants nominating connections/providing data regarding these interactions/relationships – can be offputting
- Having clearly articulated ethical procedures can reassure participants and enhance response rates

Planning a SNA



COMPLEX SYSTEMS AND NETWORK
SCIENCE FOR PREVENTION AND CONTROL
OF NONCOMMUNICABLE DISEASES

*A WHO COLLABORATING CENTRE
FOR RESEARCH AND TRAINING*

**Network
survey
development**